



GOUPIL

ELECTRIC VEHICLES

Brochure



GOUPIL

PIONEER IN ELECTRIC UTILITY VEHICLES

A FRENCH MANUFACTURER...

For more than 25 years, Goupil has been designing and manufacturing electric utility vehicles. Our goal: to provide every professional with a tailor-made solution for their business.

The Goupil range includes three models:

- the G2 : ultra-compact.
- the G4 : most versatile.
- the G6 : best-performing.

...WITH THE STRENGTH OF A LARGE GROUP: POLARIS.

Since 2011, Goupil is part of the Polaris group, the American manufacturer leader in recreational all-terrain vehicles.

The strength of this large group enables us to sustain our brand in France and abroad and to accelerate the development of new solutions for our customers.



25 years
of experience



30,000
vehicles sold



3,000
customers
in Europe



200
employees



13,700 m²
factory in the
Lot-et-Garonne



Distributed in more
than **40** countries

THE BENEFITS OF CHOOSING GOUPIL ELECTRIC VEHICLES



01

Clean and green

Goupil utility vehicles are 100% electric. With them, play your part in a sustainable future. They do not release any CO₂ when being used, therefore contributing to cleaner air and less nuisance for passersby and local residents during urban service calls.

02

Cost-effective

Opting for an electric utility vehicle will help manage and reduce costs. From day one, using your Goupil allows you to save on energy costs (no more refills at the petrol station), as well as maintenance costs (no need for oil change, belt change or replacing spark plugs...). Recharging costs 2 € for 100 km.

03

Silent and comfortable

Thanks to its electric technology, your Goupil can operate anywhere without causing any inconvenience. For instance, noise pollution often associated with night-time deliveries will no longer be an issue. The electric motor also reduces vibrations while driving, providing more comfort for operators.

04

Adaptable

Goupil has made customisation their biggest asset. When opting for an electric Goupil vehicle, you can choose from a dozen body options available on our catalogue, or send us a specific request. Our R&D department takes the time to study every request in order to offer a tailor-made solution: your business deserves an efficient work tool, do not hesitate to contact your local dealer!

05

A unique performance-to-size ratio

The Goupil DNA has not changed, and neither has our motto: design and produce compact size and high-performance electric utility vehicles. Every Goupil has been thoroughly devised to meet our customers' needs: size, payload, volume, manoeuvrability... Every aspect has been carefully designed to support you in your daily work.

06

Designed and manufactured in France

Goupil is first and foremost a French business story. In 1996, Goupil sets up in the Southwest of France, in the department of Lot-et-Garonne (47). The company has always remained true to their local and rural ties. Every day, nearly 200 people work in the small town of Bourran to offer you electric solutions, ever more efficient and adapted to your needs.

A WORK TOOL ADAPTED TO YOUR NEEDS

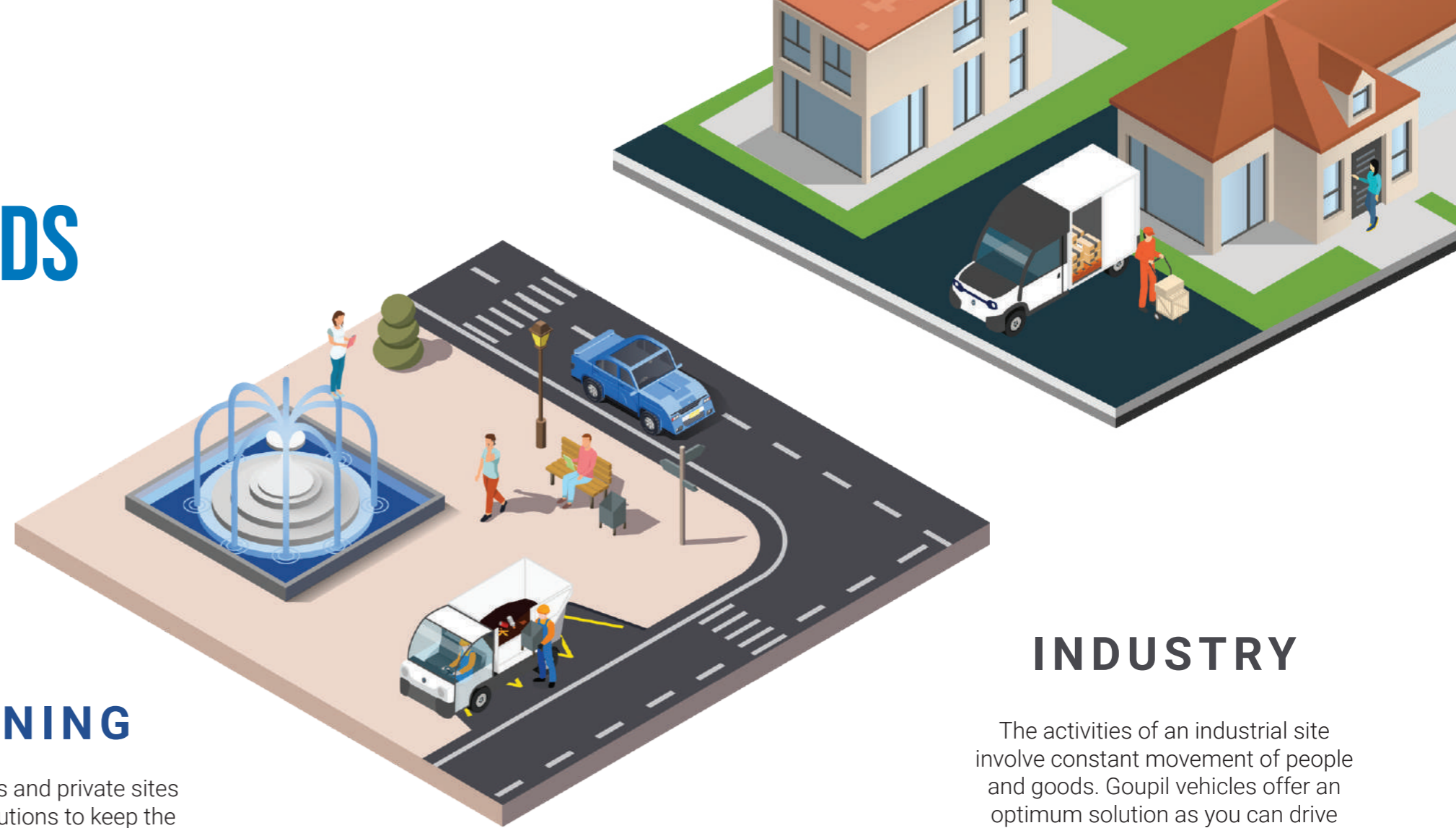
GREEN SPACES

A Goupil vehicle is the perfect partner for the maintenance of your parks and gardens. Vacuuming leaves? Collecting green waste? Watering plants? Transporting work tools? Everything is possible with Goupil!

TOURISM

Do you own a hotel? A camping site? An amusement park? The Goupil is made for you!

More and more customers consider acting for the protection of the environment a priority. Sustainable development takes on its full meaning when choosing a 100% electric Goupil vehicle for the maintenance of your site.



CLEANING

Both public spaces and private sites need effective solutions to keep the premises clean. Waste collection, high-pressure cleaning, street sweeping... These tasks are made easier with Goupil: your teams can move quickly and operate anywhere, even in the most restrictive spaces.

INDUSTRY

The activities of an industrial site involve constant movement of people and goods. Goupil vehicles offer an optimum solution as you can drive anywhere, even inside buildings! Their electric technology allows you to get close to the action without causing any inconvenience. Loading, unloading, moving equipment has never been so easy!



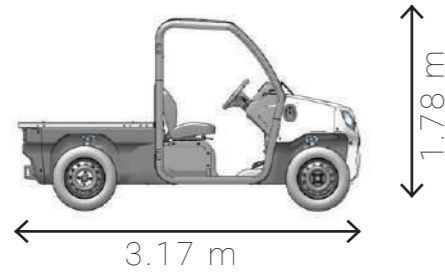
DELIVERY

Last mile delivery solutions require appropriate vehicles. Our Goupil vehicles meet with town centres' highest standards: their electric technology allows them to circulate everywhere. They are also an optimum choice for "stop & go" applications.

BUILD YOUR GOUPIL IN 3 STEPS.

CHOOSE A **WHEELBASE** AMONG 4 DIFFERENT MODELS.

GOUPIL-G2



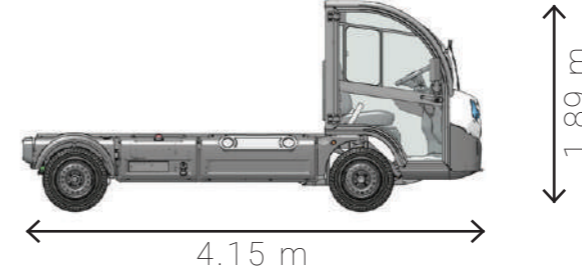
L7e-CU homologation
2 seats
Top speed: 30 km/h

GOUPIL-G4



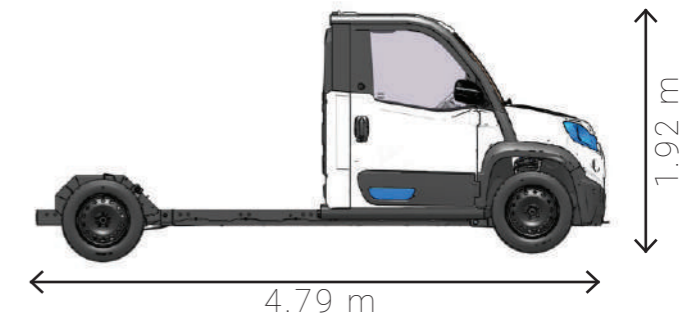
N1 homologation
2 seats
Top speed: 50 km/h

GOUPIL-G4L



N1 homologation
2 seats
Top speed: 50 km/h

GOUPIL-G6



N1 homologation
3 seats
Top speed: 80 km/h

2

DETERMINE **THE RANGE** REQUIRED FOR YOUR DAILY ACTIVITIES.

PRIVATE PROPERTIES | Up to 30 km

GOUPIL-G2

Lead acid: 5.8 kWh

GOUPIL-G4

Lead acid: 8.6 kWh

GOUPIL-G6

-

URBAN USE | Up to 70 km

Lithium: 7.5 kWh

Lead acid: 11.5 ou 15.4 kWh*
Lithium: 9 kWh

-

SUBURBAN USE | Over 70 km

-

Lithium: 14 kWh* or 21 kWh*

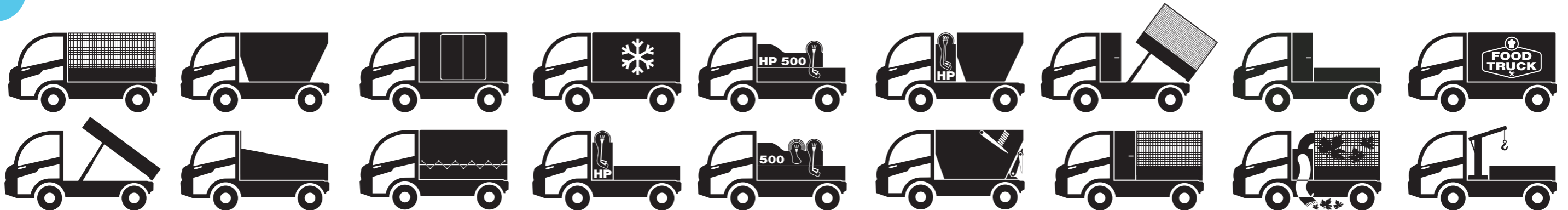
Lithium: 28.8 kWh

*Recommended for HP washers or leaf collectors.

3

CHOOSE THE **EQUIPMENT** BEST SUITED FOR YOUR BUSINESS.

HAVEN'T FOUND WHAT YOU'RE LOOKING FOR? GOUPIL OFFERS CUSTOMISED SOLUTIONS, YOU ONLY HAVE TO ASK!



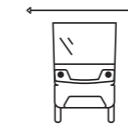
GOUPIL-G2 LEFT HAND DRIVE

HIGHLY COMPACT MADE EASY

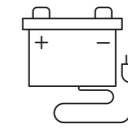




PAYLOAD
Exceeding 500 kg



ULTRA-COMPACT
1.10 m wide



100% ELECTRIC
Lithium

THE PERFECT BALANCE: COMPACT, ROBUST AND VERSATILE.

Perfectly suspended on McPherson suspensions and mounted on 14 inch wheels, the G2 is at ease on all terrains.

Fitted with low pressure tyres, the G2 can easily venture off-road, on sandy or muddy tracks.

The aluminium cab, fully waterproof, combined with a steel tubular frame give it a lightness and unique resistance for this type of vehicle.

Make the most of its ultra-compact size and drive through even the most restrictive spaces.



Spacious two-seater cab.

The G2 cab is entirely waterproof. Depending on your business requirements, you can choose between glass and heavy-duty doors. These can be removed with no impact on road certification.

A modern design with a competitive edge.

The Goupil G2 will bring real change to your business! Its image, both modern and environmentally-friendly, will enhance your own brand image, internally as well as externally.

Driving speed 30 km/h.

The G2 can drive up to 30 km/h, ensuring your operators can safely move between buildings: risks are reduced for people inside the cab, as well as those on the outside.

Type-approval: L7e-CU

With or without doors, the G2 is certified for road use.

PRODUCT RANGE.

THE G2 OFFERS TWO BODY OPTIONS, IDEAL FOR PARKS AND GARDENS MAINTENANCE AND MULTI-SERVICE OPERATIONS.

01

PICK-UP

The all-purpose configuration

- Pick-up with wooden load bed fitted with drop-down and removable sides and tailgate.
- Loading area fitting a Euro pallet (120 x 80 cm).
- Ergonomic design: loading height at 80 cm.
- Payload exceeding 500 kg.
- Optional: front mesh extension with tool carrier and/or side mesh extensions, manually operated tipper.



02

BOX VAN

Safe transport of goods

- Box van with 1 or 2 shutters.
- Ergonomic design: loading height at 80 cm and easy access thanks to the shutter.
- Volume: 1.25 m³.
- Side opening dimensions: 820 x 745 mm.

FEATURES.

THE G2 OFFERS UNIQUE PERFORMANCES IN A SECTOR USUALLY RESERVED TO GOLF CARTS: EUROPEAN ROAD CERTIFICATION, COMPLETE WATERPROOF CAB, PAYLOAD EXCEEDING 500 KG, ETC.

Standard

- 3-point seatbelts
- Side indicators
- 2-speed windscreen wipers
- Heated windscreen
- LED headlights
- Cup holders
- 12-volt socket and USB plug
- Wing mirrors
- Adjustable seats (depth)

Optional

- Towing hook
- Forward/Reverse motion buzzer
- Reflective stripes – Class 2
- Roof bar with adaptable options: 2 beacon lights + tricolor hazard warning triangle
- Bluetooth speaker
- Beacon light mounted on cab
- Standard or heavy duty doors
- Electric heater 1 900 W



**A BRIGHT
AND PRACTICAL CAB
WITH MULTIPLE FEATURES**

RIGHT HAND DRIVE

GOUPIL-G4

VERSATILITY WILL
BECOME YOUR NEW
STANDARD



A UTILITY VEHICLE THAT ADAPTS TO ALL TRADES.

Following in the footsteps of the models that have driven Goupil's success, the G4 adopts the concept of a modular chassis and offers unrivalled versatility.

It adapts to your business needs by offering tailored solutions for bin or organic waste collection, the maintenance of your parks and gardens, facility management, deliveries...

With a payload of up to 1,200 kg and a maximum range of 199 km, the G4 will meet the requirements of the most demanding applications.

With the European N1 type-approval, the G4 is safe for road-use.



Compact size.

With a width of only 1.2 m and a 3.90 m turning radius (M version), the G4 is the right utility vehicle for driving quietly and safely through town centres or private properties (hotel resorts, industrial sites...).

Ideal for customised body options.

Goupil designs their body options to ensure perfect integration. We also work with partners to offer you specific solutions: aerial work platform, crane, tailgate, rear load collection body, transporting oxygen tanks, casualties...

Spacious two-seater cab.

The G4 cab has been designed to facilitate the work of your operators. It can be fitted with glass doors providing excellent visibility or with heavy-duty doors for more demanding applications.

Travel speed of 50 km/h.

With the G4, you can reach 50 km/h, ideal for driving through town centres without slowing ongoing traffic.

TWO LENGTHS, A DOZEN POSSIBILITIES.

ARE YOU LOOKING FOR A COMPACT, SAFE AND ROBUST VEHICLE?
ONE THAT WILL SUPPORT YOU EVERY DAY?
THE GOUPIL G4 IS MADE FOR YOU!

The G4 is intended for professionals who require a vehicle with considerable payload, while remaining compact and highly manageable.

Since 2019, the **G4 is available in a long version** for activities that require a higher loading capacity. The L version is 50 cm longer, offering a larger loading area.



G4 L transporting scooters in Switzerland.



G4 L van body for Hurby in the Netherlands.

A COMPREHENSIVE WHEELBASE.

THE G4 IS A UTILITY VEHICLE WITH MANY AVAILABLE OPTIONS.

Standard

- Adjustable comfort seats with headrests
- 3-point seatbelts
- Circuit breaker
- Immobilizer sensor on driver seat
- Handbrake with torque limiting sensor
- Windscreen with defrosting/demisting device
- Windscreen wiper with washer
- LED headlights
- Rear fog light and reverse light
- High/low speed switch
- High-definition LCD colour display with on-board computer (hour meter, energy consumption...)
- 4-poles charging plug
- Rear cab window
- Proportioning electric braking system
- Acoustic Vehicle Alerting System (AVAS)
- Light sensor
- Seatbelt warning light

Optional

- Tow hitch with trailer plug
- DAB+ car radio
- Pedestrian warning system (bell)
- Reflective stripes I class 2
- Roof bar with adaptable options (cannot be combined): 2 beacon lights + tricolor hazard warning triangle / 1 beacon light / 1 work light
- Diesel heating unit | 900 - 2,000 W | 15 L tank
- Reversible air-conditioning unit | 1,800 W
- Lateral storage units | capacity 60 L (G4 M version) / capacity 125 L (G4 L version)
- Electric heater | 1,200 W
- Electric power steering
- Cab storage set
- Lateral steps
- USB plug x2 | 2.1 A
- Charging mode 2/mode 3
- 4-season wheels 3PMSF | 155R13C
- Standard or heavy-duty doors



PRODUCT RANGE

THE G4 OFFERS THE LARGEST CHOICE OF EQUIPMENT IN OUR RANGE TO MEET YOUR EVERY NEED.

MAIN BODY OPTIONS

PICK-UP

The basic one

- Reinforced aluminium pick-up fitted with aluminium drop-down and removable sides and tailgate.
- Anti-slip and rot-resistant wooden load bed.
- Optional: standard or half-height mesh cage body | standard solid cage body.



TIPPER

The versatile one

- Reinforced aluminium tipper fitted with aluminium drop-down and removable sides and tailgate.
- Cab mounted tipper controller on wander lead.
- Hydraulic cylinder including safety valve and stand (compliant with 3.5t standards).
- Optional: standard or half-height mesh cage body | standard solid cage body.

BOX VAN

Up to 3 shutters

- Box van with 3 m³ of actual useable volume (cubical internal volume, square corners, no wheel arches).
- Loading height: 80 cm.
- Optional: side and/or rear shutters.



WATERING/HIGH PRESSURE WASHER

With a 500 L tank

- Spray lance: with integrated vacuum system for the detergent, user-friendly, left- or right-hand side storage.
- Rotomolded and ride-on tank - no water motion.



HIGH TIP WASTE COLLECTION BODY

Collecting waste

- Half dropdown loading door to both sides.
- Rear rubber stop.
- Hydraulic cylinder including safety valve and stand (compliant with 3.5t standards).

REFRIGERATED VAN

Transporting fresh products

- Class C built-in cold unit.
- Adjustable temperature: from -20°C to +12°C.
- Loading height: 80 cm.

COMBINED BODY OPTIONS

HIGH-PRESSURE WASHER

- Spray lance: with integrated vacuum system for the detergent, user-friendly, side storage.
- Configurable access (left- or right-hand side).
- Tiedown rings.
- No water motion.

LEAF COLLECTOR

- Leaf collector/mulcher with net with Velcro straps on the rear to empty the load bed by tipping.
- Vacuum nozzle with handle and casters for easy handling.
- Mulcher: volume reduction of the leaves up to 6 times (depending on humidity).

STORAGE BOX

- Available with pick-up or tipper.
- Left- and right-hand side door handle with lock.
- Gas struts.



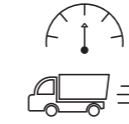
GOUPIL-G6 LEFT HAND DRIVE

AN EXCEPTIONAL BUSINESS PARTNER

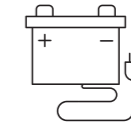




RANGE
Up to 158 km



TOP SPEED
80 km/h



100% ELECTRIC
Lithium

BIGGER, FASTER, MORE COMFORTABLE.

Expert in electric utility vehicles for more than 25 years, Goupil rolls out its best performing model yet.

Featuring outstanding performances for its compact size, the G6 has been designed for local stakeholders in urban and suburban areas.

As with all our vehicles, it will meet the requirements of your business thanks to the many different configurations available: load beds, box vans, waste collectors...

With the European N1 type-approval, the G6 is safe for road-use.



A brand new design.

From the steel chassis to the drive trains, not forgetting the cabin structure, the G6 has been designed to offer a utility vehicle that is comfortable, safe and robust. Opting for a cabin floor design with front wheel drive gives extensive flexibility to bodybuilders and ensures safe roadholding at all times.

A spacious three-seater cab.

The cab and driving position have been designed to offer optimal comfort to the driver as well as the passengers throughout their workday.

Travel speed of 80 km/h.

With the G6, driving through town centres as well as suburban areas has never been easier. Its speed allows you to drive anywhere without interfering with the traffic flow.

Mode 2 or mode 3 recharging.

The Goupil G6 can be recharged on a household socket or, for faster charging, using an electric charging station, also called Wallbox.

5 000 W heater
3 temperature and
ventilation levels (7 vents)

Heated wing mirrors,
electrically adjustable and
folding

Storage compartment
for A3 sized documents
and lockable glovebox

Electric windows

Sliding storage compartment
underneath the passenger seat

Adjustable steering wheel
Angle adjustment to help
find the perfect driving
position

Power steering

Driver airbag

DESIGNED TO EASE YOUR WORK DAY

A comprehensive set of standard equipment including numerous safety elements:
driver airbag, ABS and traction control, ESP, Hill Start Assist...

LCD HD
colour display

The specific features
control panel can be
accessed from the driver's
seat (lifting/lowering the
load bed...)

LED headlights
(adjustable height)
and tail lights

PRODUCT RANGE

THE G6 OFFERS A RANGE OF EQUIPMENT TO MEET YOUR BUSINESS NEEDS.

BODY OPTIONS FOR GREEN AREAS

PICK-UP

- Aluminium pick-up mounted on a high subframe fitted with removable sides and tailgate.
- Load bed height: 92 cm
- Useable loading area: 4.6 m²
- Payload: 975 kg
- Optional: side mesh extensions.



TIPPER

- Aluminium tipper mounted on a high subframe fitted with removable sides and tailgate.
- Hydraulic cylinder including safety valve and stand (compliant with 3.5t standards).
- Optional: side mesh extensions.

ALUMINIUM MOBILE CONTAINER WITH HYDRAULIC HOOKLIFT

- Developed in partnership with DALBY, this equipment is particularly aimed at green areas maintenance teams for transporting ride-on lawnmowers.

- Hydraulic hooklift
- Useful loading area: 4.24 m²
- Payload: 665 kg



COMBINED STORAGE BOX

- Available with tipper or pick-up.

- Left- and right-hand side door handle with lock.

- Gas struts.

LOW FLOOR PICK-UP

- Low-floor variant of the pick-up, it offers a loading height of 40 cm.



BODY OPTIONS FOR CLEANING SERVICES



HIGH TIP WASTE COLLECTION BODY

- The high tip waste collection body is very popular for collecting bins in town centres.

REFUSE COLLECTION VEHICLE WITH BIN LIFTER AND SHOVEL

- Developed in partnership with the French manufacturer FAUN, leader in refuse collection vehicles.

- Useable volume: 3.5 m³
- Payload: 400 kg

BULKY WASTE COLLECTOR

- Road-legal steel bulky waste collector, fitted with particularly sturdy removable sides and tailgate.

- Useable loading area: 4.2 m²
- Payload: 798 kg



BODY OPTIONS FOR SERVICE & MAINTENANCE OPERATIONS

CONVERTED BOX VAN

- In partnership with the French manufacturer SD Services, Goupil has developed tailor-made converted box vans for maintenance trades (electricians, plumbers, painters...).

AERIAL WORK PLATFORM

- In partnership with KLUBB, preliminary studies are underway to develop a G6 with a two people aerial work platform.

THREE-WAY TIPPER

- In partnership with the French manufacturer DURISOTTI, a G6 three-way tipper for the building trade.

- Useable loading area: 4.5 m²
- Payload: 710 kg
- Three-way tipper

THEY HAVE CHOSEN GOUPIL AROUND THE WORLD

City councils

City of Paris *France*
 City of Marseille *France*
 City of Lyon *France*
 City of Bordeaux *France*
 City of Toulouse *France*
 City of Seville *Spain*
 City of Bilbao *Spain*
 City of Palma de Mallorca *Spain*
 City of Valencia *Spain*
 City of Helsinki *Finland*

City of Geneva *Switzerland*
 City of Lausanne *Switzerland*
 City of Düsseldorf *Germany*
 City of Munich *Germany*
 City of Vienna *Austria*
 City of Budapest *Hungary*
 City of Praha *Czech Republic*
 City of Reykjavik *Iceland*
 City of Brussels *Belgium*
 City of Anderlecht *Belgium*

City of Amsterdam *Netherlands*
 City of Rotterdam *Netherlands*
 City of The Hague *Netherlands*
 City of Dublin *Ireland*
 City of Brighton *UK*
 City of Bristol *UK*
 City of London *UK*
 City of Dubai *UAE*
 City of Kolding *Denmark*
 City of Malmö *Sweden*

Delivery & Logistics

Picnic *Netherlands & Germany*
 Flyerman *Netherlands*
 CityHub *Netherlands*

DHL *Netherlands*
 Eimskip *Iceland*
 Passion Froid *France*

Chronopost *France*
 Swiss Post *Switzerland*
 Bartolini *DPD group, Italy*

Industrial sites

Naval Group *France*
 Chantiers de l'Atlantique *France*
 SNCF *France*
 Sanofi *France*
 Seat *Spain*
 Daimler *Germany*
 Volkswagen *Germany*
 Opel *Germany*
 Bayer *Germany*
 Lufthansa Technik *Germany*

Merck *Germany*
 John Deere *Germany*
 Robert Bosch *Germany*
 Thyssen Group *Germany*
 Siemens *Germany*
 Arcelor *Germany & Belgium*
 Boehringer Ingelheim *Austria*
 Nokian Tyres *Finland*
 FedEx *Belgium*
 B-Rail *Belgium*

Hitachi *UK*
 Rolls Royce *UK*
 Toyota *UK*
 Rio Tinto *Iceland*
 Heineken *Netherlands*
 KLM *Netherlands*
 Tata Steel *Netherlands*
 Sabic *Netherlands*
 Volvo *Sweden*
 Saudi Aramco *Saudi Arabia*



Service providers

Compass *France*
 Sodexo *France*
 Derichebourg *France*
 GSF *France*
 Samsic *France*
 Urbaser *France & Spain*
 Ferrovial *Spain*
 Valoriza *Spain*

Acciona *Spain*
 Amiat Iren Turin Group *Italy*
 Quendoz Aosta *Italy*
 A2A Milan *Italy*
 Brussels Major Events *Belgium*
 AT&T *Israel*
 Israel Electric Corp. *Israel*
 Wind *Israel*

EL-AL *Israel*
 Veolia *France & UK*
 Canary Wharf *UK*
 Brighton Hospital *UK*
 Dubai Elec. & Water Authority *UAE*
 Avinor *Norway*
 Iceland Ground Services *Iceland*
 IJmond Werkt! *Netherlands*

Resorts & Events

Euro Disney *France*
 Center Parcs *France & Belgium*
 PortAventura *Spain*
 Europa-Park *Germany*
 Zoo Brno *Czech Republic*

Belambra Clubs *France*
 Club Med *France*
 Pierre & Vacances *France*
 Irish Museum *Ireland*
 Al-Ain Zoo *UAE*

Copenhagen Zoo *Denmark*
 Legoland *Denmark*
 Landal Green Parks *Netherlands*
 Efteling *Netherlands*
 Rotterdam Zoo *Netherlands*

How about you? Don't wait any longer to find out what our electric utility vehicles can do for you!



GOUPIL CUSTOMER SERVICE

WITH OVER 25 YEARS OF EXPERIENCE IN THE FRENCH AND EUROPEAN MARKET, GOUPIL HAS BUILT AN EFFECTIVE AFTER-SALES SERVICE, RELYING ON THEIR TECHNICIANS' EXPERTISE AS WELL AS A NETWORK OF EXCLUSIVE DISTRIBUTORS.

The successful partnership with our Distributors involves theoretical and practical training sessions with our accredited trainer.

A team dedicated to the international market

The Goupil customer service, located at the company's headquarters, have all the necessary technical, material and human resources to effectively handle all queries. Thanks to these qualified teams, Goupil remains close and offers a quick responsive time to customers worldwide.

- Two technicians, dedicated to the export market, support our network of exclusive distributors present in more than 40 countries with technical diagnosis and queries, processing of warranty claims...
- They are assisted by two Customer Service assistants who manage incoming calls, spare parts orders and administrative tasks.
- Together, they play a major part in our commitment towards customer satisfaction, based on responsiveness, efficiency and advice.

Customer focused

Always aiming to offer the best **quality of service** possible, the Goupil customer service department maximises its resources in order to guarantee spare parts availability for 10 years



9 000
references in stock



1,8 M€
in parts inventory
(excl. production)



12 500
orders shipped
per year



85%
or urgent orders
shipped within 24 hours

ADDITIONAL SERVICES

WARRANTY AND MAINTENANCE

Goupil offers the following warranty for their vehicles and equipment:



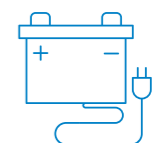
Wheelbase

2-year spare parts and labour
European warranty



Equipment

2-year spare parts and labour



Batteries

7-year spare parts and labour

Goupil offers service and maintenance plans:

- **Annual servicing** to check wear and tear parts and perform necessary adjustments.
- A maintenance contract including 2 service checks per year and a warranty extension.
- A **full service** contract.

RENTAL SOLUTIONS

Goupil offers rental solutions adapted to your profession:

- **Long-term leasing: 36, 48 or 60 months**
- **Short-term leasing (seasonal rental, events...)**

For more information on our rental solutions, do not hesitate to contact us.

SECOND-HAND VEHICLES

In 2018, Goupil set up a unit dedicated to second-hand vehicles. After their return, these vehicles are **refurbished** and then resold or rented.

TAILOR-MADE SOLUTIONS

At Goupil, we know every customer is different, so we offer original solutions, customised to meet your needs. These solutions complete our standard catalogue and allow for every professional to have a vehicle that's made for them. Contact the local dealer to get your personalised study!



GOUPIL

contact@goupil-ev.com • goupil-ev.com